

**WARNING:**  
CHOKING HAZARD - Small parts  
Not for Children under 3 years.

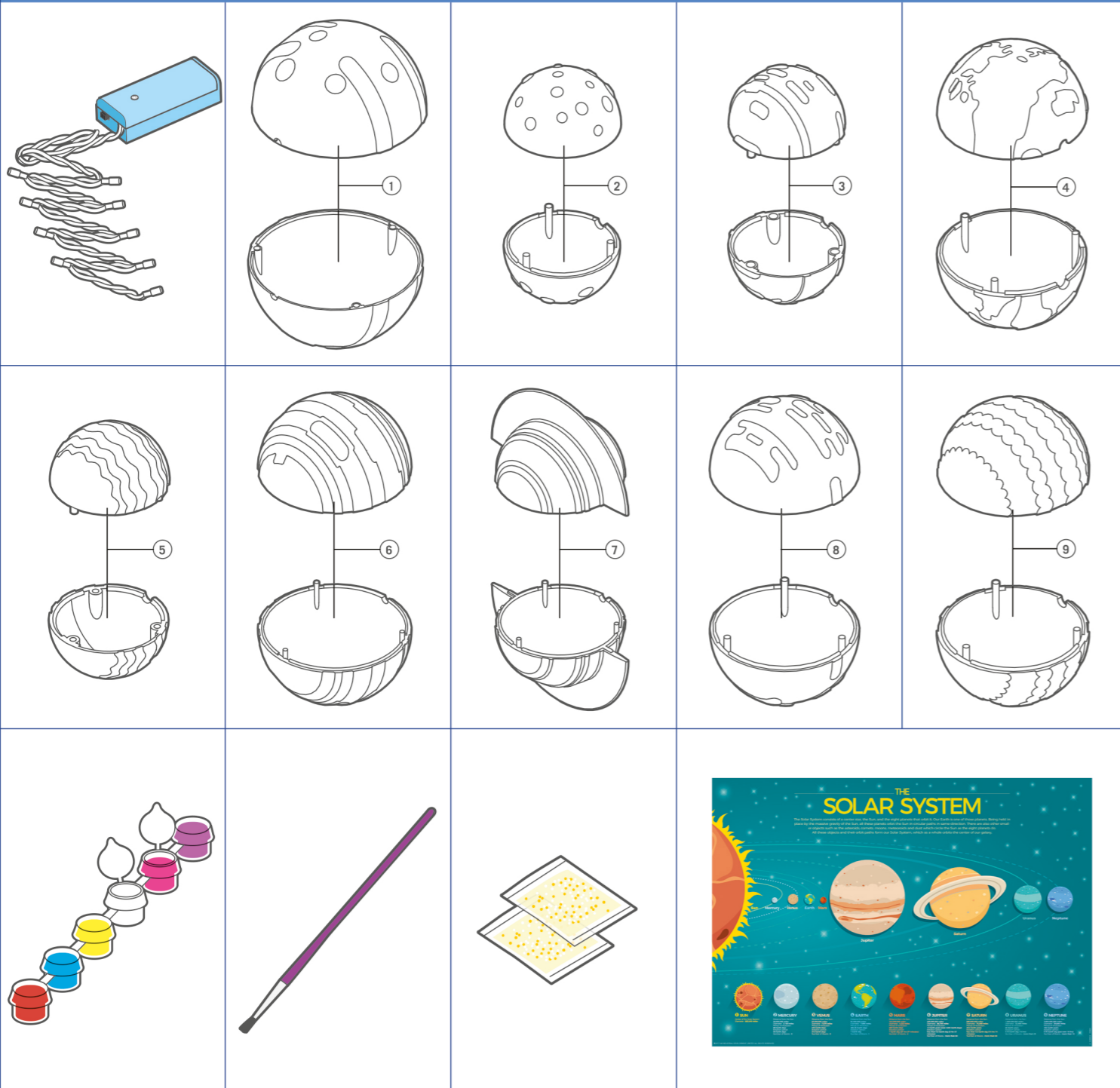
## A. SAFETY MESSAGES

1. Please read through these instructions before you start. 2. Adult assistance and supervision are recommended. 3. This kit and its finished product contain small parts that may cause choking if misused. Keep away from children under 3 years old. 4. Do not use regular or other string lights for this project, as they may generate too much heat and become a fire hazard.

## B. USE OF BATTERIES

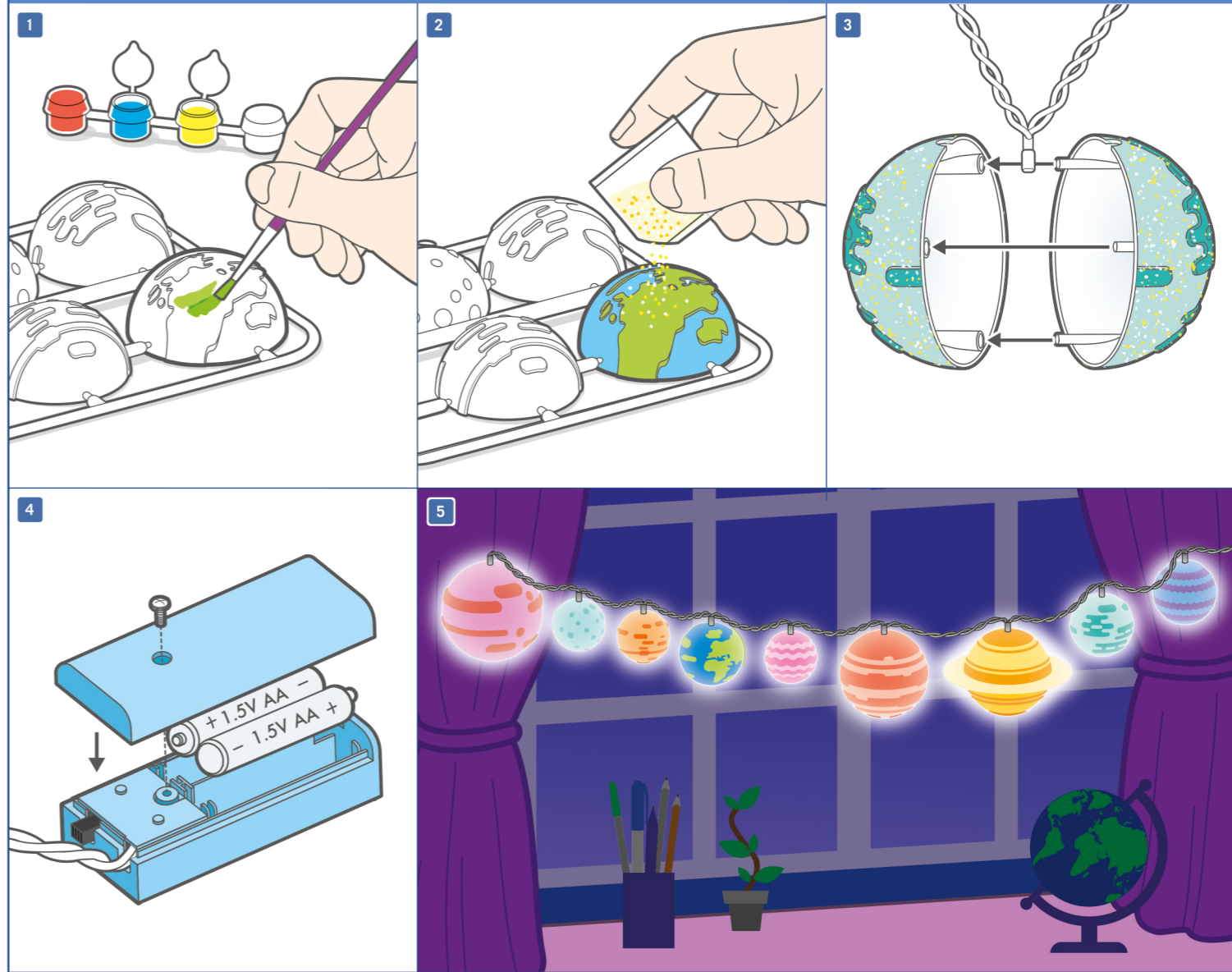
1. Requires two 1.5V AA batteries (not included). 2. For best results, always use fresh batteries. 3. Make sure you insert the batteries with the correct polarities. 4. Remove the batteries from the kit when not in use. 5. Replace exhausted batteries straight away to avoid possible damage to the kit. 6. Rechargeable batteries must be removed from the kit before recharging. 7. Rechargeable batteries should be recharged under adult supervision. 8. Make sure that the supply terminals in the battery case are not short circuited. 9. Do not attempt to recharge non-rechargeable batteries. 10. Do not mix old and new batteries. 11. Do not mix alkaline, standard (carbon-zinc), or rechargeable batteries.

## C. CONTENTS



String lights with 9 light bulbs x 1, set of planet models with a number marked at the back x 9 (Sun – 1, Mercury – 2, Venus – 3, Earth – 4, Mars – 5, Jupiter – 6, Saturn – 7, Uranus – 8, Neptune – 9), paint strip x 1, paint brush x 1, packet of glitter x 2, poster x 1 and detailed instructions.

## D. INSTRUCTIONS



1. Paint the planet model using your own colour scheme, or follow the graphics on the poster. Some planet models come with a frame. You can paint them without detaching, as it will be easier to handle. Here are some painting and colour mixing tips:  
 Orange = Yellow + Red      Sky Blue = Blue + White      Brown = Yellow + a little Red + a little Blue  
 Green = Yellow + Blue      Lime Green = Yellow + a little Blue      Turquoise = Blue + White + a little Yellow  
 Purple = Red + Blue  
 Avoid mixing more than two colours together, because that will make the final colour look muddy. Intensify the colour by applying a second layer of paint when the first layer is dry.  
 2. You can sprinkle the glitter onto the painted pieces before the paint is dry. Leave the painted models to dry for 3 hours before moving on to the next step.  
 3. When the models are completely dry, detach them from the frames. A small hole is reserved to fit in the light bulb. Hold the light bulb in place when snapping the matching pairs together. Look for the number embossed at the back of the model and select the corresponding light bulb in the string lights. In order of distance from the Sun they are: Mercury, Venus, Earth, Mars, Jupiter, Saturn, Uranus, and Neptune.  
 4. Insert two 1.5V AA batteries into the battery case and secure with a screw.  
 5. Your cool Solar System string lights are done! You can hang them anywhere you like.

## E. FUN FACTS

- Until about 400 years ago astronomers still believed that the Sun and other planets orbited the Earth. One astronomer, Galileo, was arrested for suggesting that the Earth goes round the Sun!
- The Sun is hot — very hot. On the surface, the temperature is 5,500°C. In the centre, it's a blistering 15.6 million °C.
- If the Earth were much closer the Sun all the water would boil away. If it were further away, all the water would freeze. Either way, life as we know it could not exist.
- During a solar eclipse, the Moon casts a shadow on the Earth's surface. Under the shadow, it goes dark and chilly, as though night had come in the middle of the day.
- On Mercury, daytime and night-time each last for a Mercury year and a half (a year on Mercury lasts 88 Earth days). If you lived on Mercury, you would have two birthdays every day!

**QUESTION AND COMMENTS:** We value you as a customer and your satisfaction with this product is important to us. If you have comments or questions, or you find any part of this kit missing or defective, please do not hesitate to contact our distributor in your country. You will find the address printed on the package. You are also welcome to contact our Marketing Support Team: Email: infodesk@4m-ind.com, Fax (852) 25911566, Tel: (852) 28936241, Web site: WWW.4M-IND.COM