

# 3D MOULD & PAINT DRAGONS

PLEASE SCAN THE QR CODE FOR VIEWING MULTI-LANGUAGE INSTRUCTIONS.



FR. Veuillez scanner le code QR pour afficher les instructions multilingues pour ce kit. DE. Bitte scanne den QR-Code, um die mehrsprachige Anleitung für dieses Set anzusehen. NL. Scan de QR-code om de instructies voor deze set in verschillende talen te bekijken. IT. Scansiona il codice QR per visualizzare le istruzioni multi-lingua per questo kit. ES. Escanee el código QR para ver instrucciones en varios idiomas para este kit. JA. QRコードをスキャンして、本キットの多言語説明書をご覧ください。

**⚠ WARNING:**  
**CHOKING HAZARD - Small parts.**  
Not for Children under 3 years.  
Use Only Under Adult Supervision.

**WARNING!** NOT SUITABLE FOR CHILDREN UNDER 5 YEARS. FOR USE UNDER ADULT SUPERVISION. READ THE INSTRUCTIONS BEFORE USE. FOLLOW THEM AND KEEP THEM FOR REFERENCE.

## SAFETY MESSAGES FOR USE OF PLASTER POWDER

Plaster moulding kits are considered chemical toys in the European Union. Please read through the following precautions and instructions before you start.

### PLASTER POWDER

The plaster powder provided in this kit is a kind of calcium sulphate. The material is safe for intended use. However, it is recommended that you wash your hands after the project is done. If you have any known skin allergies, you should first seek your physician's advice before using the kit. In case of any accidental ingestion, consult a physician. Please call your local health centre or our product distributor as listed in our package for further information.

### FIRST AID INFORMATION

If swallowed : Wash out mouth with water, drink some fresh water. **DO NOT INDUCE VOMITING.** Seek immediate medical advice. If in doubt, seek medical advice without delay. Take the chemical and /or product together with the container with you. In case of injury: always seek medical advice. In case of eye contact: wash out eye with plenty of water, holding eye open. Seek immediate medical advice.

### ADVICE FOR ADULT SUPERVISION

- This chemical toy is not suitable for children under 5 years. For use under adult supervision. Keep this chemical toy set out of reach of children under 5 years old. Read and follow these instructions, the safety rules and the first aid information and keep them for reference. Incorrect use of plaster can cause injury and damage to health. Only carry out those activities which are listed in the instructions. Because children's abilities vary, even within age groups, supervising adults should exercise discretion as to which activities are suitable for a particular child. The supervising adult should discuss the warnings, safety information and the possible hazards with the child or children before commencing the activities.
- The area surrounding the activity should be kept clear of any obstructions and away from food storage. It should be well lit, ventilated and close to a water supply. The working area should be cleaned immediately after carrying out the activity. Particular attention should be paid to the safe handling of the alkalies and acids. A solid table with a heat resistant top should be used.

### SAFETY RULES

- Keep children under the specified age limit and animals away from the activity area.
- Store the kit out of reach of young children.
- Wash hands after carrying out activities. Clean all equipment after use.
- Do not use any equipment which has not been supplied with the set or recommended in the instructions for use.
- Do not eat, drink or smoke in the activity area.
- Plaster dust may irritate the eyes, nose and throat. Do not place the material in the mouth. Do not inhale dust or powder. Do not apply to the body. Avoid contact with eyes.

In case of accidental ingestion, please contact your local hospital or our central office for first aid information. You may also wish to keep the following distributor contact information for further reference:

CA - PLAYWELL ENTERPRISES LTD. E: [service@playwellcanada.com](mailto:service@playwellcanada.com) T: 1-416-439-0044.

UK - GREAT GIZMOS LTD. CHURCHILL COURT, 3 MANOR ROYAL, CRAWLEY, WEST SUSSEX, RH10 9LU, UK. E: [enquiries@greatgizmos.co.uk](mailto:enquiries@greatgizmos.co.uk). T: 44-1293-543221 W: [www.greatgizmos.co.uk](http://www.greatgizmos.co.uk).

IE - GREAT GIZMOS LTD. 51 BRACKEN ROAD, SANDYFORD, DUBLIN D18 CV48, IRELAND. E: [Ireland@greatgizmos.co.uk](mailto:Ireland@greatgizmos.co.uk). T: 353-1-969-3241.

US - TOYSMITH. 3101 WEST VALLEY HWY EAST, SUMNER, WA 98390, USA. E: [info@toysmith.com](mailto:info@toysmith.com). T: 800-356-0474.

### OTHER REMARKS ABOUT PLASTER POWDER

Before you start mixing the plaster, please note the following:

Plaster powder starts to harden once it is mixed with water. It is a gradual process in which the viscosity of the mixture will slowly reduce until it becomes hard. Always monitor the condition of the plaster when mixing. Perform the moulding when the mixture is like a smooth-paste. This is approximately 3 - 5 minutes after mixing with water. If it starts to develop into a "lump", it will be hard to use it for moulding. It is recommended that the mixing and moulding steps as described on the back should be completed within 5 - 10 minutes.

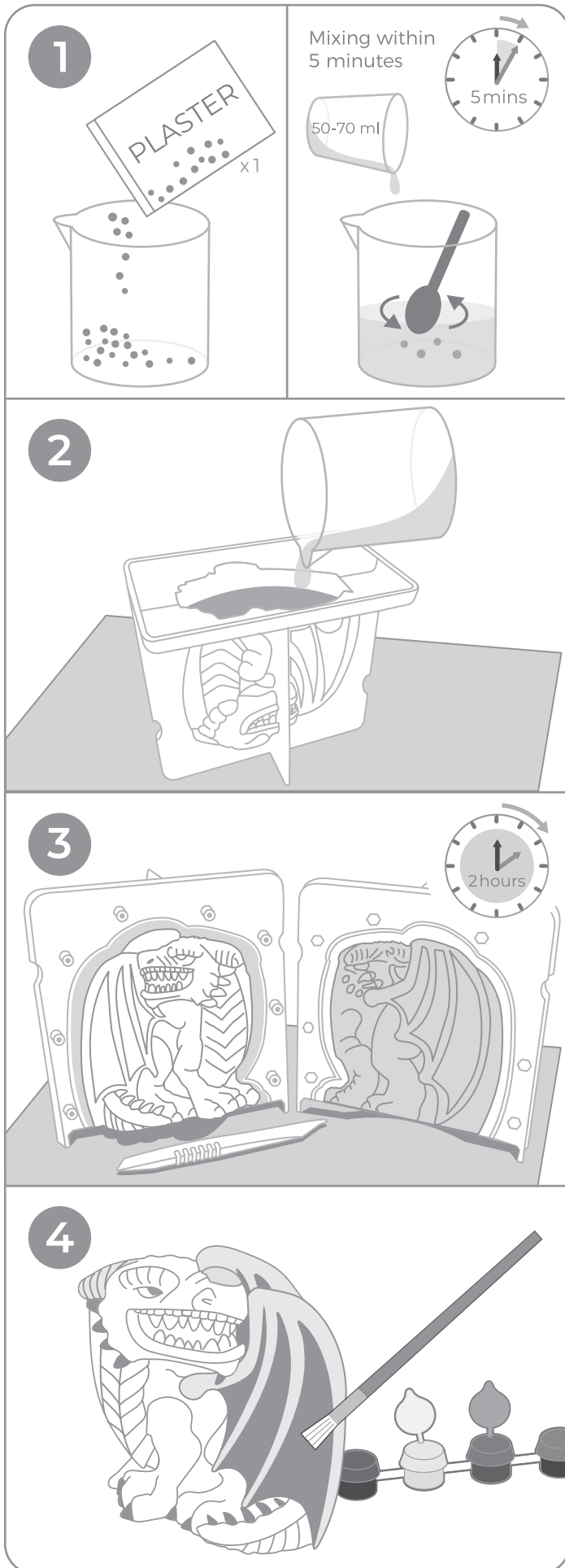
Dispose of the remaining plaster properly. Do not pour the powder down the sink or bathtub as it may clog the drain. Wash the utensils used for mixing the plaster under running water.

## QUESTIONS & COMMENTS

We value you as a customer and your satisfaction with this product is important to us. If you have comments or questions, or you find any part of this kit missing or defective, please do not hesitate to contact our distributor in your country. You will find the address printed on the package. You are also welcome to contact our Marketing Support Team: Email: [infodesk@4m-ind.com](mailto:infodesk@4m-ind.com). Fax: (852) 25911566, Tel: (852) 28936241, Web site: [WWW.4M-IND.COM](http://WWW.4M-IND.COM)

# 3D MOULD & PAINT DRAGONS

\*Read the safety instructions on the other side of this instructions before you start.



## 1. MIXING THE PLASTER

The following instructions are for mixing ONE bag of plaster at a time. Prior to starting, please be aware that the plaster mixture should be stirred for no longer than 5 minutes, as it begins to set once water is added. Prepare a mixing bowl with a smooth inner surface, a stir stick and approximately 50-70 ml (1.7-2.4 fluid oz) of water. Cut open the bag of plaster powder (100 g/ 3.5 oz) and pour it into the mixing bowl. Begin adding water slowly, however, do not add all of the water at once as doing so may make the plaster mixture too runny for moulding. Instead, stir the mixture gently as you slowly add water and monitor the consistency of the plaster paste. Under normal conditions, a bag of plaster will become a smooth paste after adding approximately 50-70 ml water to it. Please remember to finish all mixing within 5 minutes of beginning to add water, since the plaster starts to set once water is mixed in.

## 2. MOULDING

Assemble the mould by snapping the corresponding halves together. Ensure the two parts snap firmly together to avoid leaking while performing the moulding. Place the mould on a level surface. Pour the plaster mixture into the cavities. Gently shake the mould to get rid of any air bubbles. This is an important step to create a perfect dragon.

## 3. LEAVE THE PLASTER TO SET

This will take approximately 120 minutes and will release some warmth at room temperature. Prepare a piece of soft cloth on the table. Once the plaster has fully hardened, pull the two sides of the mould gently apart to avoid breaking. Then, use the crafting tool to smooth the moulding seam and any rough edges.

## 4. PAINTING AND DECORATION

You may start painting the hardened plaster when it is still moist. However, for best results, it is recommended you wait until the plaster is completely dry. Use your own colour scheme or refer to the illustrations as shown on the package for ideas. Follow the colour mixing guide below to produce more colours. Some of the following guides may not apply to your kit if the required colours are not included.

Dark Blue	=	Red	+	Blue
Sky Blue	=	White	+	Blue
Orange	=	Yellow	+	Red
Lime	=	Yellow	+	a little Blue
Pink	=	White	+	a little Red
Purple	=	White	+	Red + Blue
Turquoise	=	Blue	+	White + a little Yellow
Brown	=	Yellow	+	Red + a little Black