

Glow-in-the-dark Embroidery

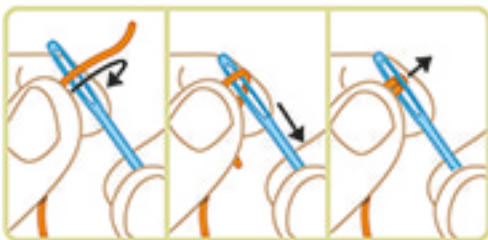
WARNING:
CHOKING HAZARD - Small parts.
Not for Children under 3 years.
Plastic Needles Contain Functional Sharp Point.

A. CONTENTS

1 embroidery hoop, 2 sheets of embroidery canvas, 2 outline templates, 2 plastic needles, 5 spools of coloured embroidery floss, 2 spools of glowing floss, pillow stuffing and detailed instructions.

B. EASY WAY TO THREAD A NEEDLE

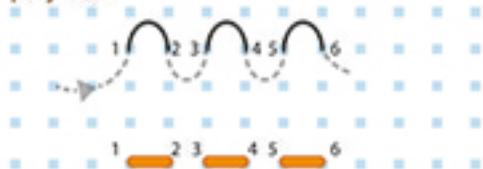
Fold the thread over the needle to make a loop, then withdraw the needle and squeeze the thread together tightly. Push that loop through the eye of the needle. The technique may seem a little difficult at first but stick with it and you'll be threading with ease in no time!



C. BASIC STITCHES

1 Running Stitch

The running stitch is the most basic stitch used in hand sewing and embroidery. This simple stitch will be used a lot in our projects.



2 Back Stitch

The back stitch is a stitch sewn backwards to the direction of the sewing. They form lines.



3 Stem Stitch

This stitch is great for curvy lines like vines and plant stems. We will use it mainly for outlining.



4 Chain Stitch

The chain stitch is a very old technique that uses a series of looped stitches to form a chain-like pattern.



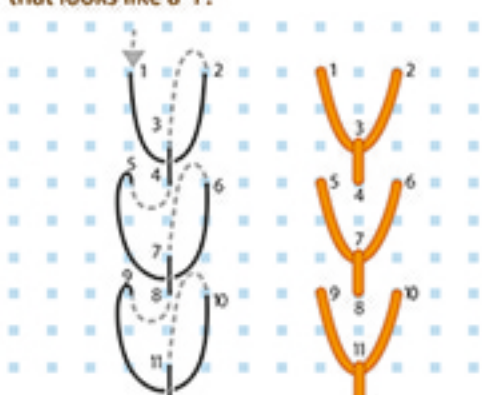
5 Lazy Daisy

This is also known as a detached chain stitch, and is a looped stitch that can be worked alone or in groups. This is often used in petal and small floral designs.



6 Fly Stitch

The fly stitch, as also known as a Y stitch or open loop stitch, is a very easy-to-do stitch that looks like a 'Y'.



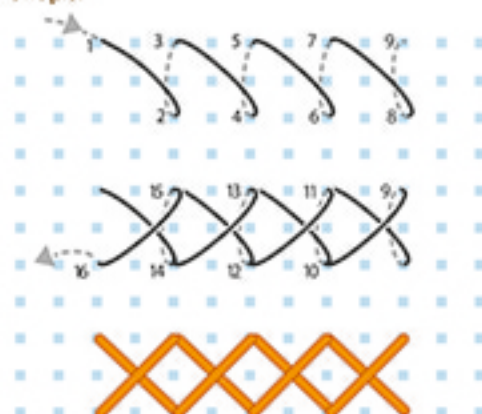
7 French Knot

The French knot is a basic element that can be strung together to make lines and shapes, or used to make a field of polka dots.



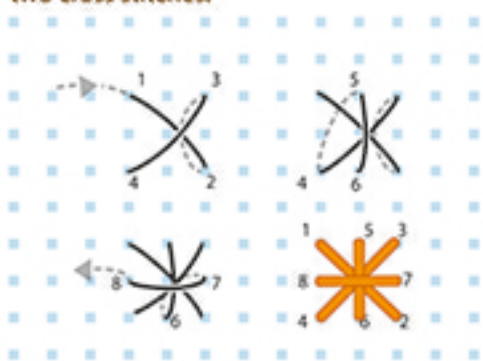
8 Cross Stitch

The cross stitch takes its name from its 'X' shape.



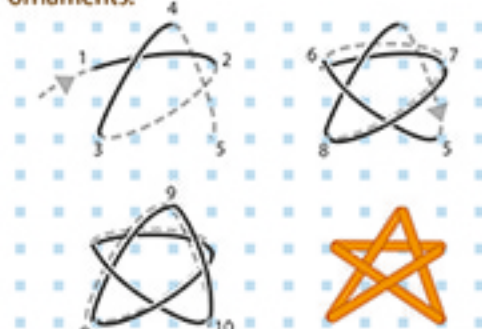
9 Smyrna Cross

The Smyrna cross is known as double cross stitch. It is basically done by alternating two cross stitches.



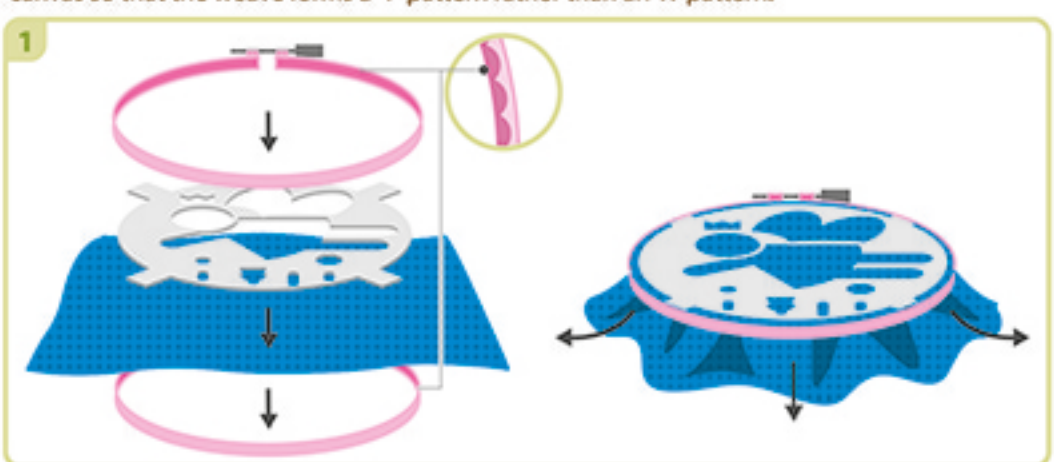
10 Woven Star Stitch

The woven star stitch is a cute stitch that can be done not only on cloth but also on things like greeting cards and tree ornaments.



D. START EMBROIDERING

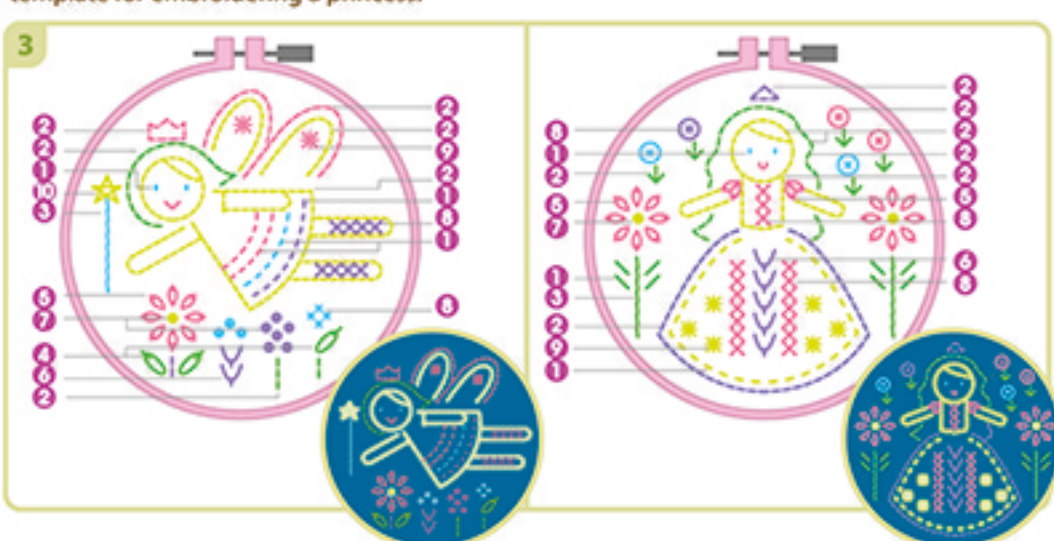
1. Place a blank canvas sheet and your selected template over the inner hoop as shown, then fit the outer hoop over the top with the patterned edge of the hoop facing up. Tighten the screw on the outer hoop, and gently pull the edges of the canvas taut. Be sure to hold the mounted canvas so that the weave forms a 'T' pattern rather than an 'X' pattern.



2. Choose a glowing floss and cut a length about 60cm (24 inches) long. Thread the needle and tie a knot at the longer end of the floss. Using the back stitch, start embroidering the outline of the fairy. After you have finished outlining, remove the paper template. You are now ready to complete your fairy with stitches!

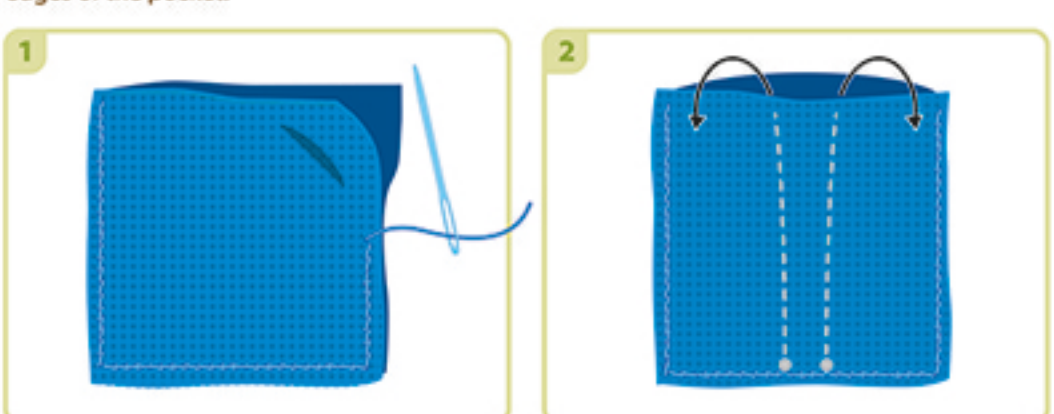


3. Using the diagram below and the stitch numbers in Section C, you can fill in your fairy with the patterns printed on the template, or create your own combination of stitches. When you're finished, release the canvas from the hoop and add borders or decorative stitching around your fairy. To display the finished work, simply mount it in the hoop and hang it up, or go to the next section to make a mini pillow or a mini bag with two canvas sheets. The kit also contains a template for embroidering a princess.



E. MAKE A MINI PILLOW OR MINI BAG

1. Line up two canvas sheets with the embroidered sides facing each other. Use the stem stitch to sew together three sides (left, right and bottom) with dark blue floss, leaving the top open.
2. When you're finished, turn the canvas pocket right-side out, so the embroidery is on the outside and the seams inside.
3. To make a mini pillow, tuck a bit of loose stuffing into the pocket you've created, and sew the top side to finish. To make a mini bag, sew the ends of a ribbon or string (not included) to the top edges of the pocket.



QUESTIONS & COMMENTS - We treasure you as a customer and your satisfaction with this product is important to us. In case you have any comments or questions, or you find any parts of this kit missing or defective, please do not hesitate to contact our distributor in your country, whose address is printed on the package. You are also welcome to contact our marketing support team at Email: infodesk@4M-IND.com, Fax: (852) 25911566, Tel: (852) 28936241, Web site: WWW.4M-IND.COM